

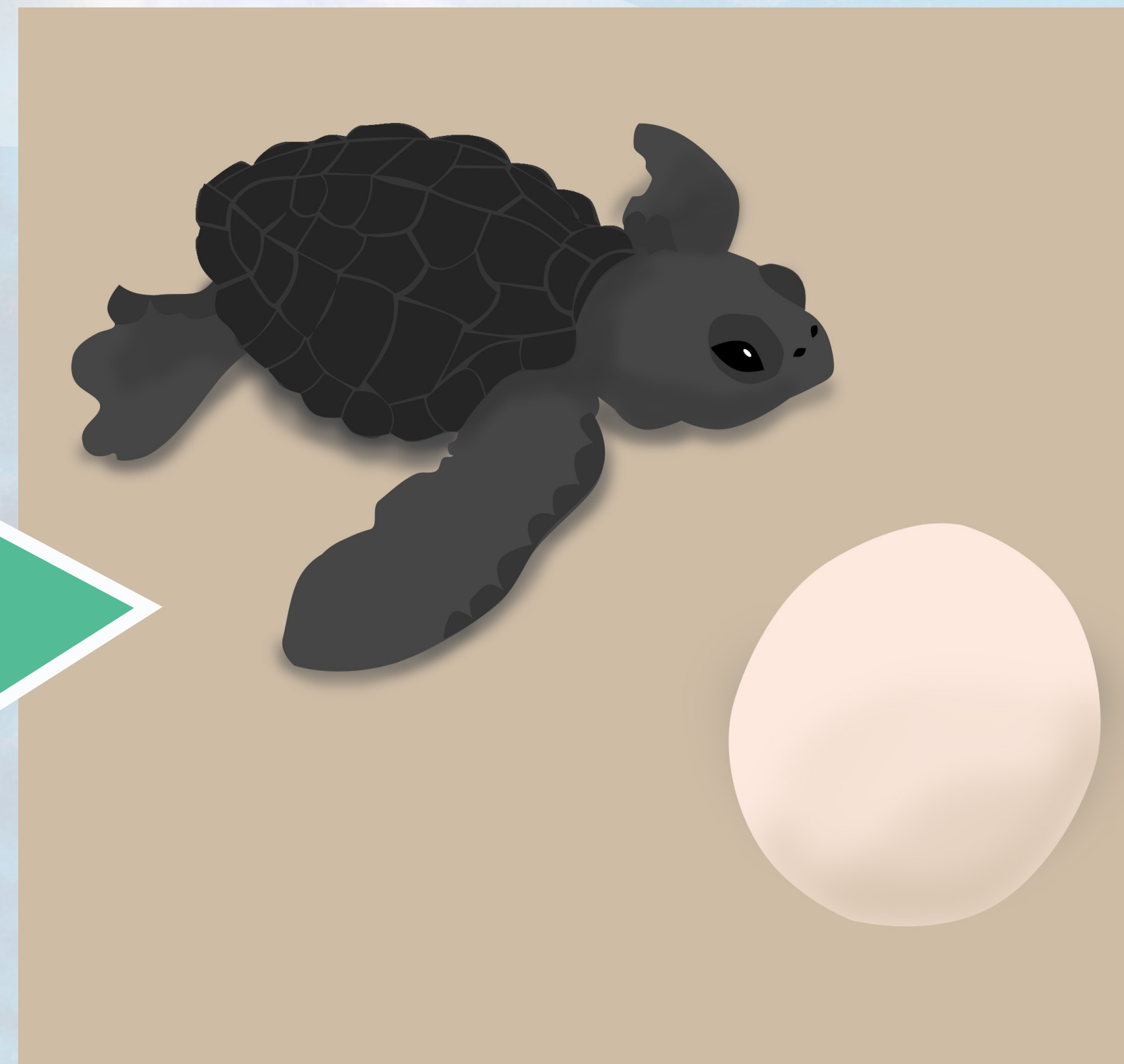


NESTING

Nesting is the only moment that sea turtles come ashore. The female returns to the same beach where she was born after at least 20 years of ocean migration. She drags herself up the beach at night and digs a nest where she will lay approximately 100 eggs. She will build 3 to 7 nests per season, and nests every 2 or 3 years.

GREEK

Greek, greek. Nequi doluta dolorep elibus aut veliate mquatias dolorro il minciae nonseque optae con conserciae quiae debitem verro tem dionet a con re maio. Et landebis mos ipsani veliate mquatias dolorro il minciae nonseque et molore dolo doluptior re desti quae nate dolut aut as dis magnis pre si bea.

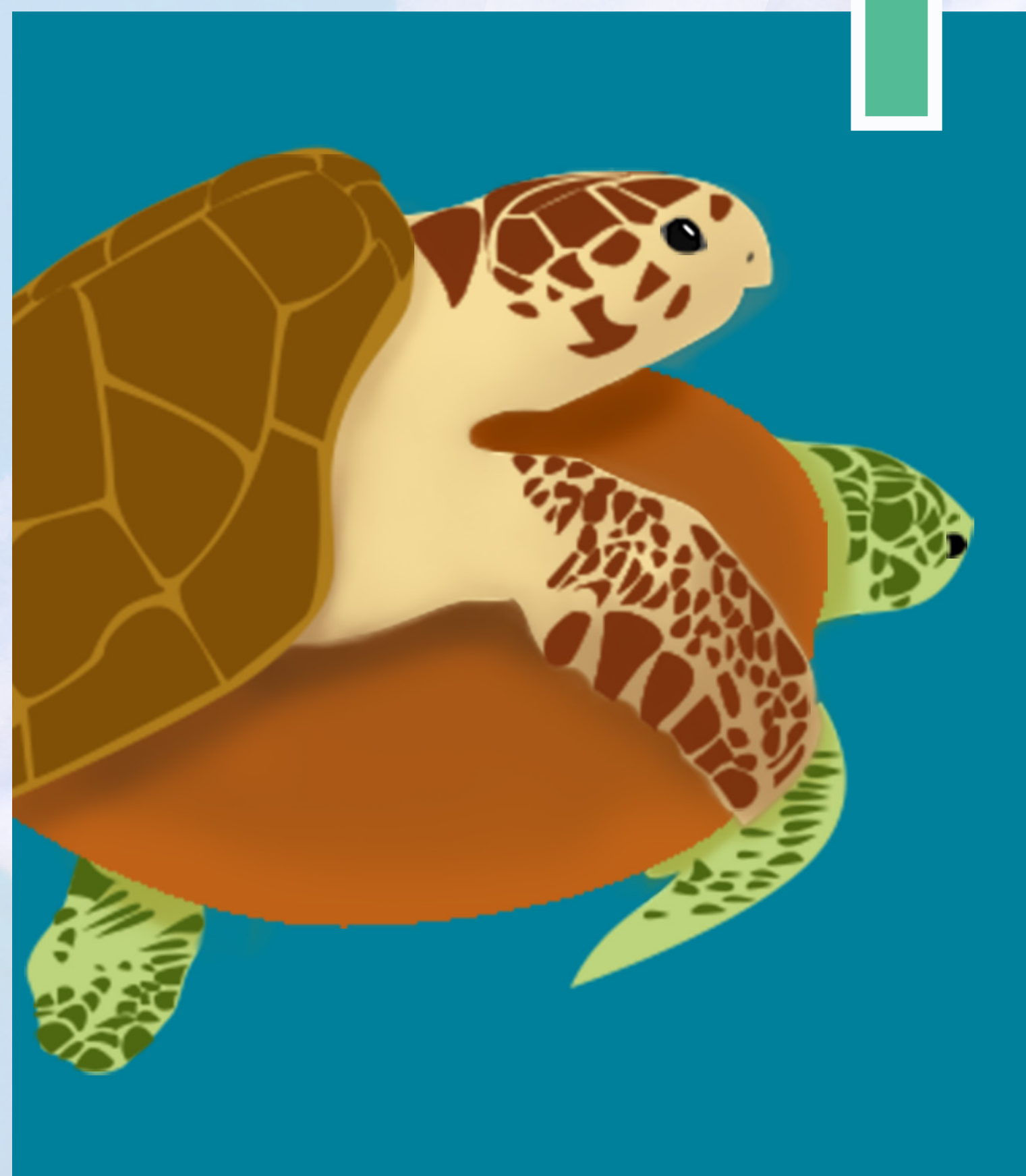


HATCHLINGS

After 80 days, the hatchling turtles emerge at night. The light reflected off the water from the sky guides them to the sea. During the journey to the ocean, the magnetic field of the earth is imprinted on the baby turtles' brains, giving them a sense of direction, and allowing them to return to the area when they mature at least 20 years later.

GREEK

Greek, greek. Nequi doluta dolorep elibus aut veliate mquatias dolorro il minciae nonseque optae con conserciae quiae debitem verro tem dionet a con re maio. Et landebis mos ipsani veliate mquatias dolorro il minciae nonseque et molore dolo doluptior re desti quae nate dolut aut as dis magnis pre si bea.



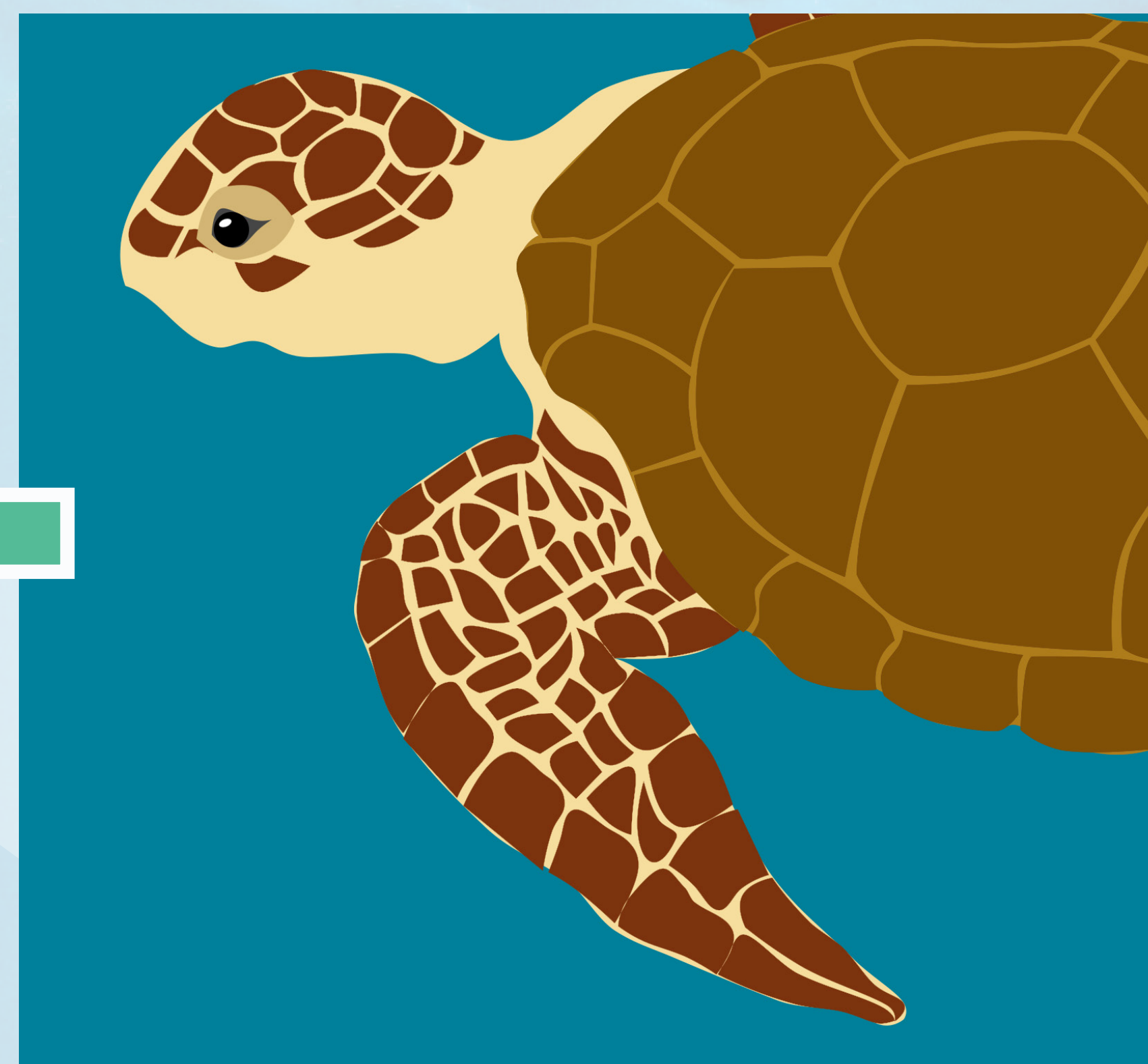
MATING & REPRODUCTION

Compared to other turtles, mating usually takes place whilst the Loggerhead turtles are migrating. Males compete over females in heat and a female can be mounted by several males. She can store the sperm and a single clutch can have up to 5 fathers. Unusually for mammals, mating triggers the female's ovulation.

GREEK

Greek, greek. Nequi doluta dolorep elibus aut veliate mquatias dolorro il minciae nonseque optae con conserciae quiae debitem verro tem dionet a con re maio. Et landebis mos ipsani veliate mquatias dolorro il minciae nonseque et molore dolo doluptior re desti quae nate dolut aut as dis magnis pre si bea.

LOGGERHEAD TURTLE LIFECYCLE (*caretta caretta*) ΚΑΡΕΤΑ ΚΑΡΕΤΑ ΚΥΚΛΟΥ ΖΩΗΣ



MIGRATION & MATURATION

Males and females can travel thousands of kilometers in order to migrate from one seasonal feeding area to another. The females will reach their sexual maturity after 20 to 50 years. From the hatchling stage only about 1 in 1000 turtles will reach the mature adult stage. Loggerhead turtles live upto between 47 to 67 years in the wild.

GREEK

Greek, greek. Nequi doluta dolorep elibus aut veliate mquatias dolorro il minciae nonseque optae con conserciae quiae debitem verro tem dionet a con re maio. Et landebis mos ipsani veliate mquatias dolorro il minciae nonseque et molore dolo doluptior re desti quae nate dolut aut as dis magnis pre si bea.



FEEDING AREAS & DIET

Hatchlings drift through open ocean hiding in Sargassum seaweed and using this environment for protection and food, until reaching juvenile age (about 45 cm). Juveniles then migrate to near-shore waters of various seasonal feeding areas, feeding mainly on bottom-dwelling invertebrates. Jellyfish are a favourite food during open water migration.

GREEK

Greek, greek. Nequi doluta dolorep elibus aut veliate mquatias dolorro il minciae nonseque optae con conserciae quiae debitem verro tem dionet a con re maio. Et landebis mos ipsani veliate mquatias dolorro il minciae nonseque et molore dolo doluptior re desti quae nate dolut aut as dis magnis pre si bea.